



PAT

NITAYACHAI

( IDEA FOCUSED  
PORTFOLIO )



# IN BRIEF

*Lanterns* is a project made to bring out the idea of working together through difficult times despite the distances and barriers between people.

I collaborated with Cordy Pinnell, a 3D specialist and we both worked remotely due to the Covid-19 travel restrictions. The project itself as well as our workflow reflect the current status quo of lockdowns and self-isolation. Through the sparkling, warm light of the lanterns, we hope to give comfort and encourage people to work together pass these difficult times.



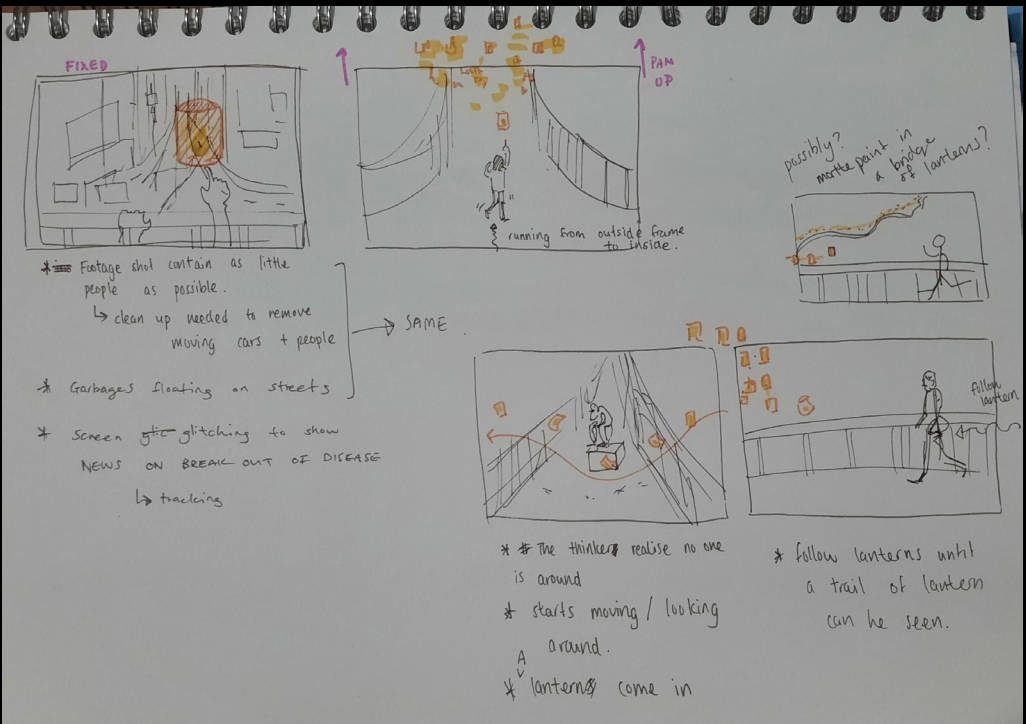
# Lanterns





# WHAT I DID

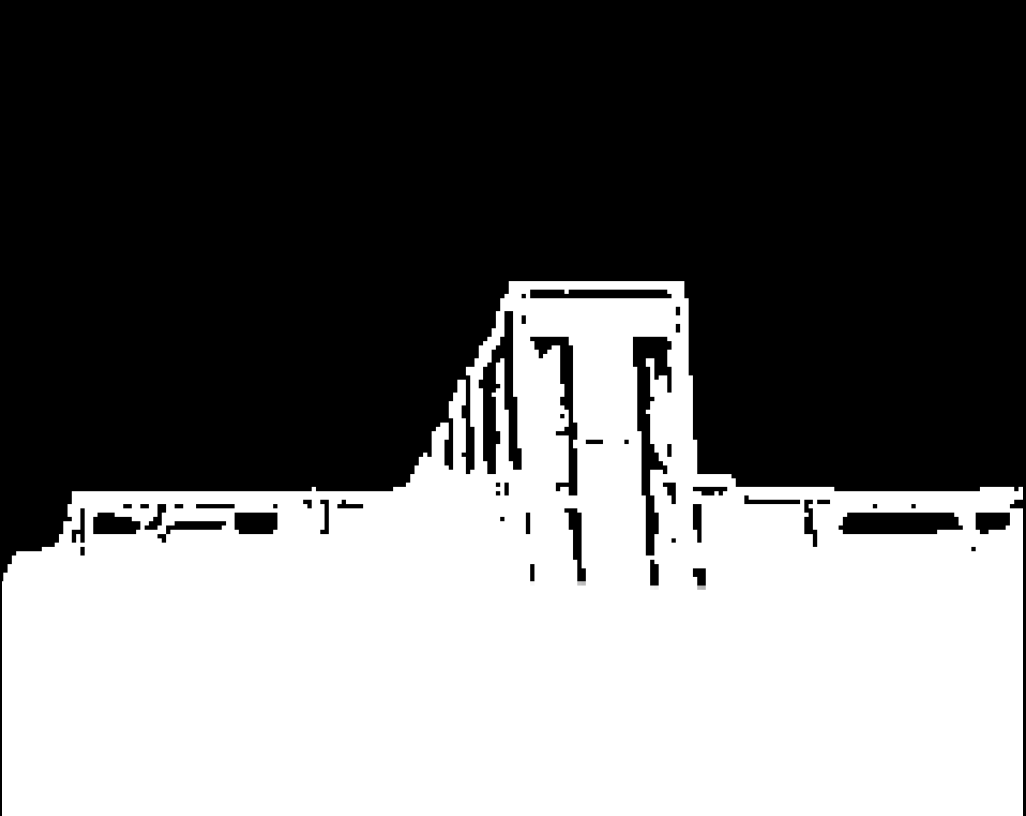
I worked closely together with my teammates to exchange new ideas and am involved in every part of the project. Whether it be developing the ideas further, gathering re-search, filming and post pro-duction jobs as shown.



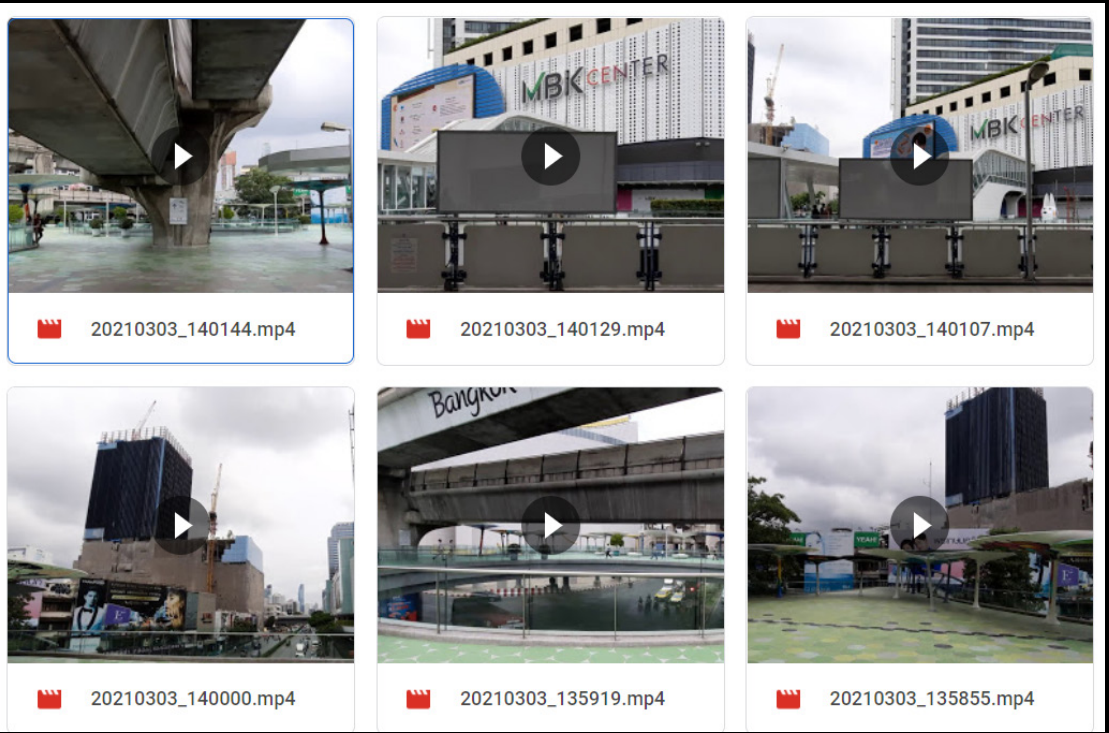
THUMBNAIL CONCEPTS IDEAS



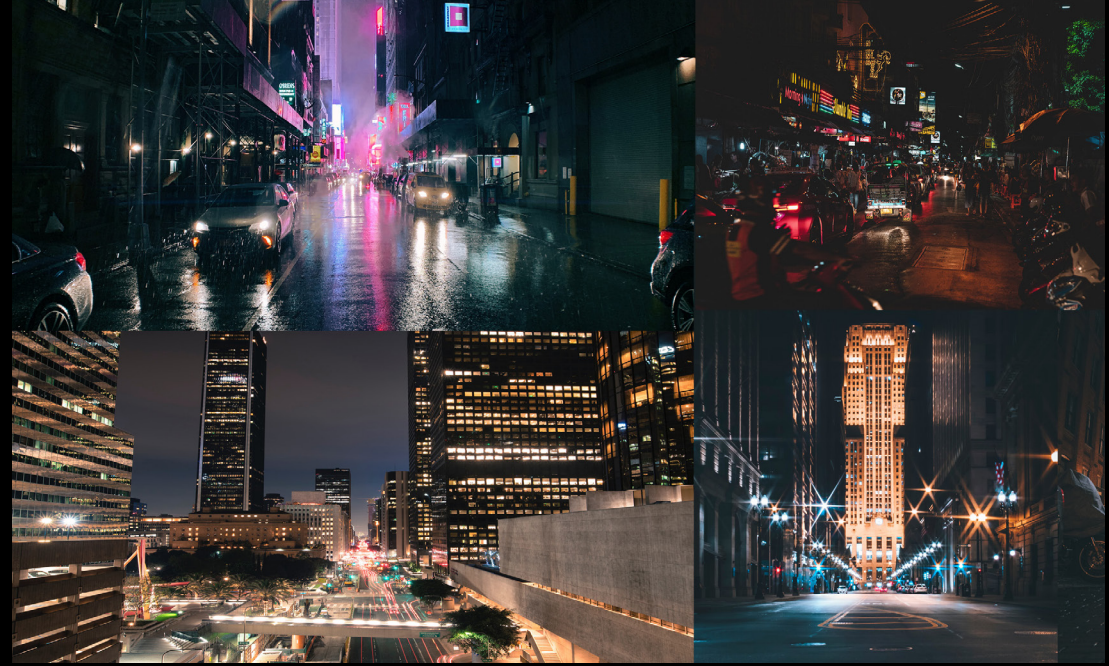
FILMING & CLEAN UP FOOTAGES



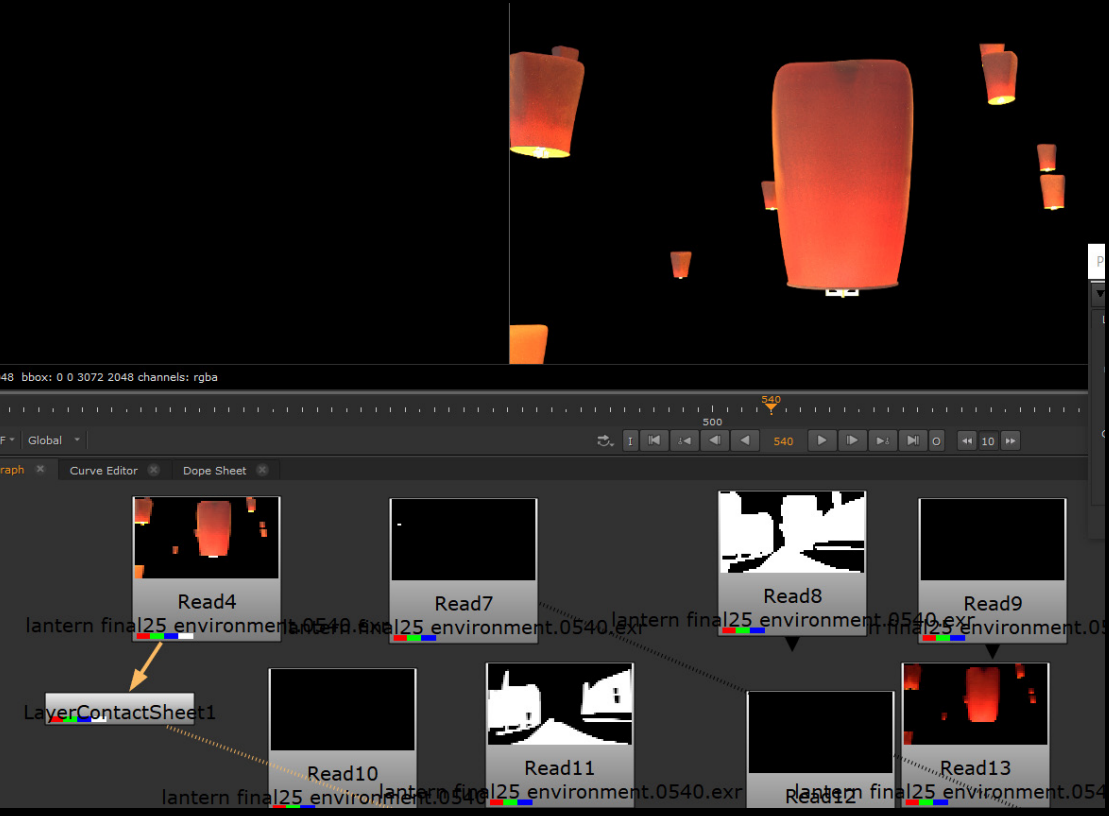
DAY TO NIGHT & CLEAN UP



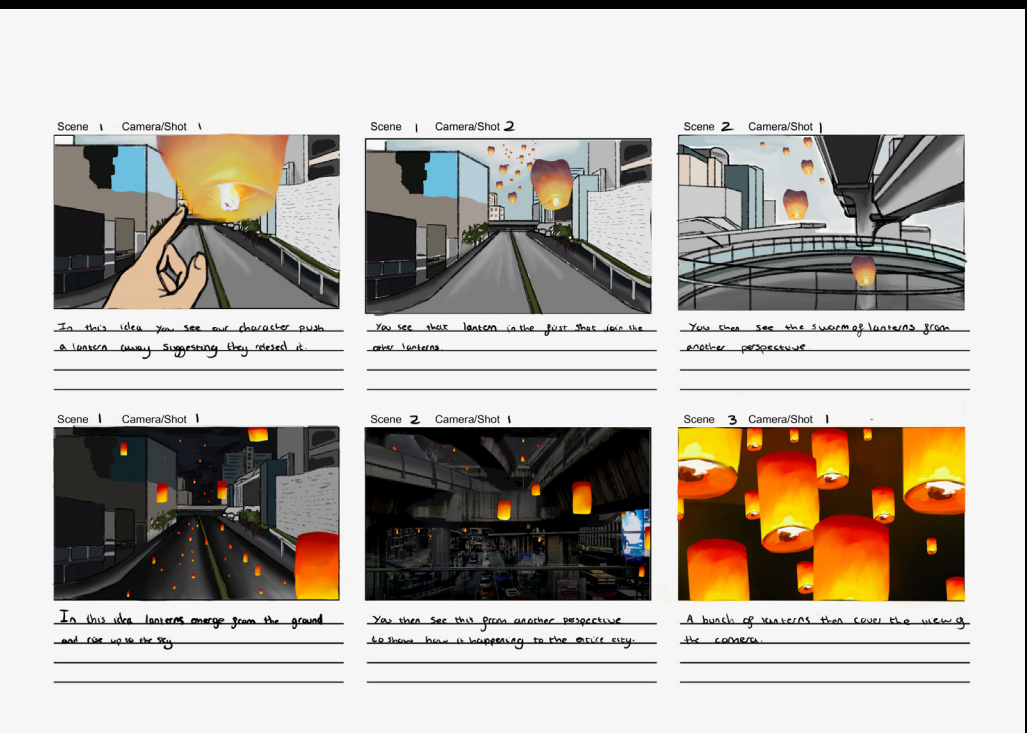
TEST SHOTS



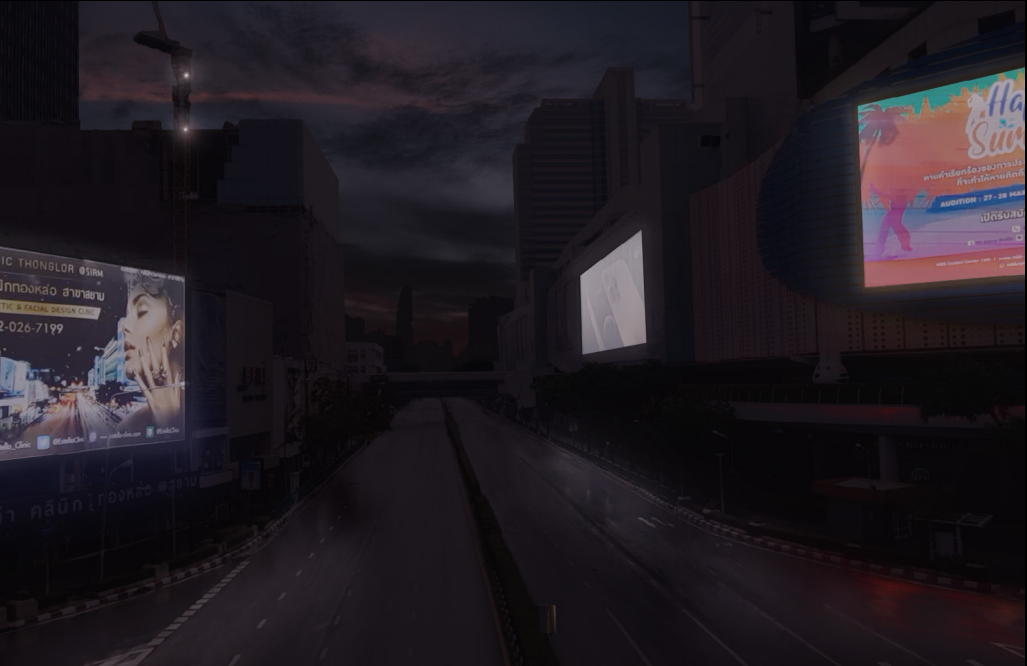
MORE VISUAL RESEARCH



COMPOSITING



RESEARCHES & REFERENCES



MATTE PAINTING



COLOUR GRADING & TOUCH UP



The core of the project was to give hope and comfort to the audience during difficult times. We started out exploring many different ideas and inspiration from different artists, before deciding on the ideas of little warm light coming together and becoming more powerful - becoming each other's strength.

Visually, the project is inspired by Yayoi Kusama's *Mirror Room*. The tiny lights are reflecting and expanding into infinity, gaining more substance and energy as a whole.

# THE IDEAS

**The Fighting Temeraire**  
Oil Painting "The Fighting Temeraire" by J.M.W Turner (1838)  
- Mental illness - Kusama often have vivid hallucinations of dots, so much that she became obsessed with it  
- One day when she was staring at the polka dots pattern on her tablecloth, the dots start to come to life and multiply, in the end expunging her and engulfing herself. She later named this experience: "Self-obliteration".

**Aftermath of Obliteration of Eternity's Context**  
- Mental illness - Kusama often have vivid hallucinations of dots, so much that she became obsessed with it  
- One day when she was staring at the polka dots pattern on her tablecloth, the dots start to come to life and multiply, in the end expunging her and engulfing herself. She later named this experience: "Self-obliteration".

**Chosen Artist OR Artwork**  
Yayoi Kusama.  
Theme could be mental illness. -> finding oneself  
Fav work: Infinity room - Aftermath of Obliteration of Eternity.

**Theme:**  
- Meaning of life + death  
- The cycle of life

**Installation**  
"All the Eternal Love I Have for the Pumpkins" by Yayoi Kusama (2016)

**The Shipwreck**  
Oil Painting "The Shipwreck" by J.M.W Turner (1805)

**Descriptions:** \* The sea \* Ships/Warships \* Sunset \* A White flag

**Themes:** \* The end of something, possibly the end of an Era, the decline of the British navy

**Context:** \* Part of a commission of a dramatic surround called "The Gates of Hell" \* Based on "The Divine Comedy" by Dante Alighieri \* Originally named "The Poet"

**Context:** \* Painted during the Spanish Civil War in response to the bombing of Guernica \* The figure was based on the photographer Dora Maar

**The Thinker**  
Sculpture "The Thinker" by Auguste Rodin (1902)

**Description:** \* Naked male sitting on a stone with his chin resting on his hand as if in thought.

**Themes:** \* Philosophy \* Creative minds \* Learning

A little mind map I used to jot down ideas that popped up as we spoke.

From previous discussion with my partner about who my favourite artists are, we found out that we have a common favourite, which was Yayoi Kusama. This lead to more ideas about using lanterns and cityscape environment to convey the theme: Solitude. We want to express the situation that is currently affecting us all and the isolation that is forced upon everyone due to the Covid-19 crisis. The lanterns is meant to represent the people coming together at the end.

**Some Different Ideas that were discussed:**

- There would be one lantern in an empty evacuated environment before bunch of lantern starts to appear and expand across the sky.
- The buildings could dissolve turn into lanterns
- Get a rig of the Thinker and have it comes to life in a evacuated city as it realised that it is left all alone
- Weeping women comes to life from her canvas and move out of the frame, then walking through a city street
- Two lanterns joining together from two different side of the world

These were the random ideas that came up in our conversation, we will be selecting our favourite ideas and developing the concepts and the meaning behind it further. Plus thinking more about the technical aspect of this project to make a piece that is both meaningful and engaging.

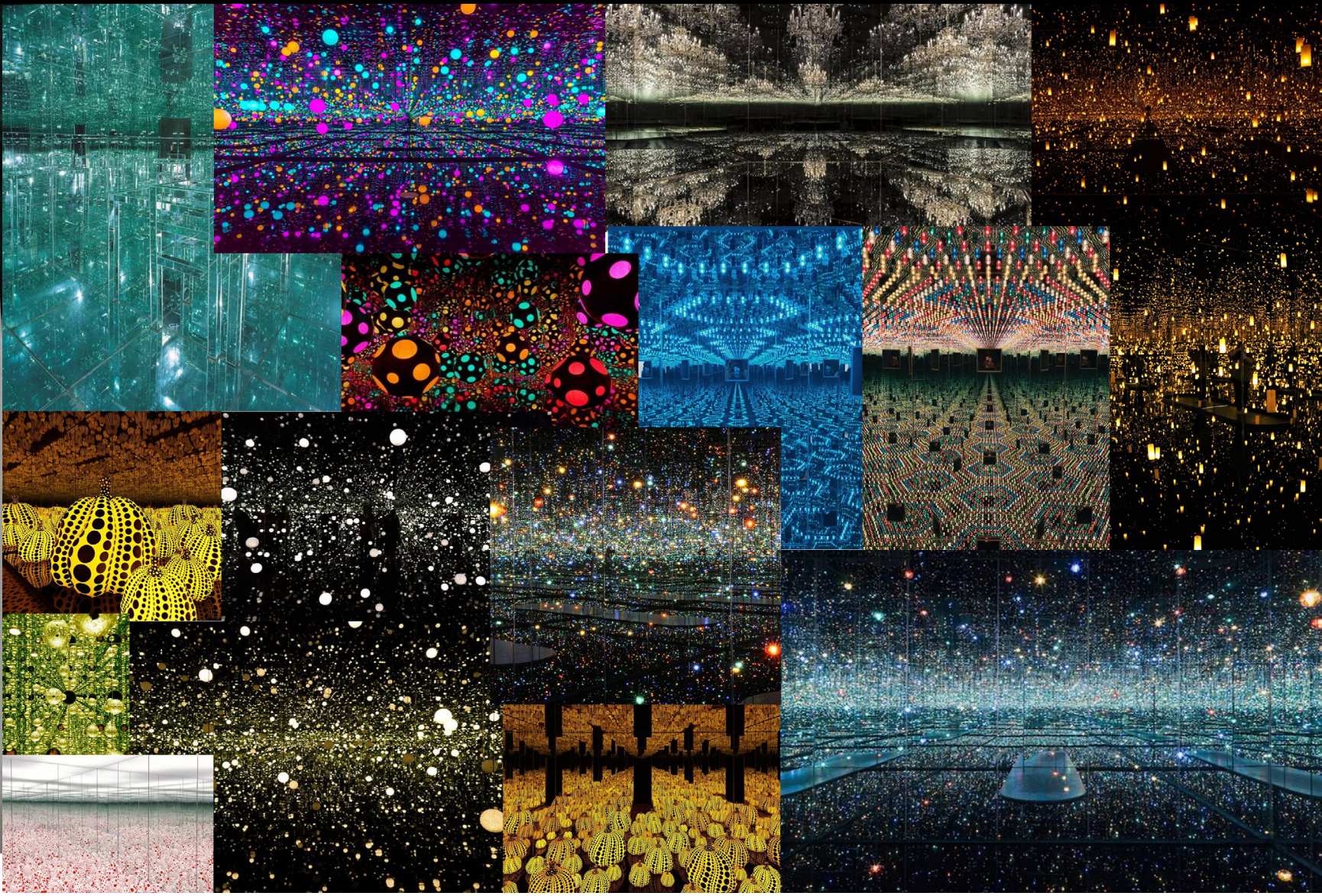
## Artist & Theme Discussion

**Weeping Woman**  
Oil Painting "Weeping Woman" by Pablo Picasso (1937)

**Context:** \* Painted during the Spanish Civil War in response to the bombing of Guernica \* The figure was based on the photographer Dora Maar

**Descriptions:** \* A woman crying using a mirror to dab her tears away. \* Wears fancy hat

**Themes:** \* Anti-War



## Environment & Style References

The scenes in the Netflix series, "Alice in Borderland" is similar to the scene that I want to depict. In "Alice in Borderland", they create a replica open set of Shibuya Crossing, where other than the roads, ticket gates and restroom everything else was made using CGI. For this project however, I would have to clean up the people and moving cars in Nuke.

Photos from "Alice in Borderland" by NETFLIX/HARO ASO, SHOGAKUKAN / ROBOT(2020)

Photos of Empty streets from Unsplash

Photos of Times Square from Unsplash

After deciding on the concept and idea, I did some secondary research on the environment and the style that this project would follow.

The key mood of this project is the "evacuated" or "empty" look, where everyone in the city had gone into a strict lockdown, so much that no one can be seen on the streets and that the roads and buildings are not maintained.

Black & white seems interesting -> Dramatic emphasis of emptiness  
Foggy, grey atmosphere -> dirty and unkempt  
More of a shopping district vibe than office building



# VIEW MORE AT

(Click on the images)



The result: a magnificent view of tiny glowing light meeting each other in the palm of your hand. Sharing a little bit of warmth with everyone stuck at home.



## IN BRIEF

The brief given was to create a short narrative on the theme: Invisibility. Working together with my classmate, Ria Li, we had complete freedom in how invisibility could be interpreted.

Together, we worked on the idea of how people often forget about the small little things in life; for example, a used hairband and other trinkets. Redefining what is important in our lives and reminding people of the importance of treasuring these tiny things is the purpose of *Small Significance*.

Pat Nitayachai

Ria (Yazhe) Li

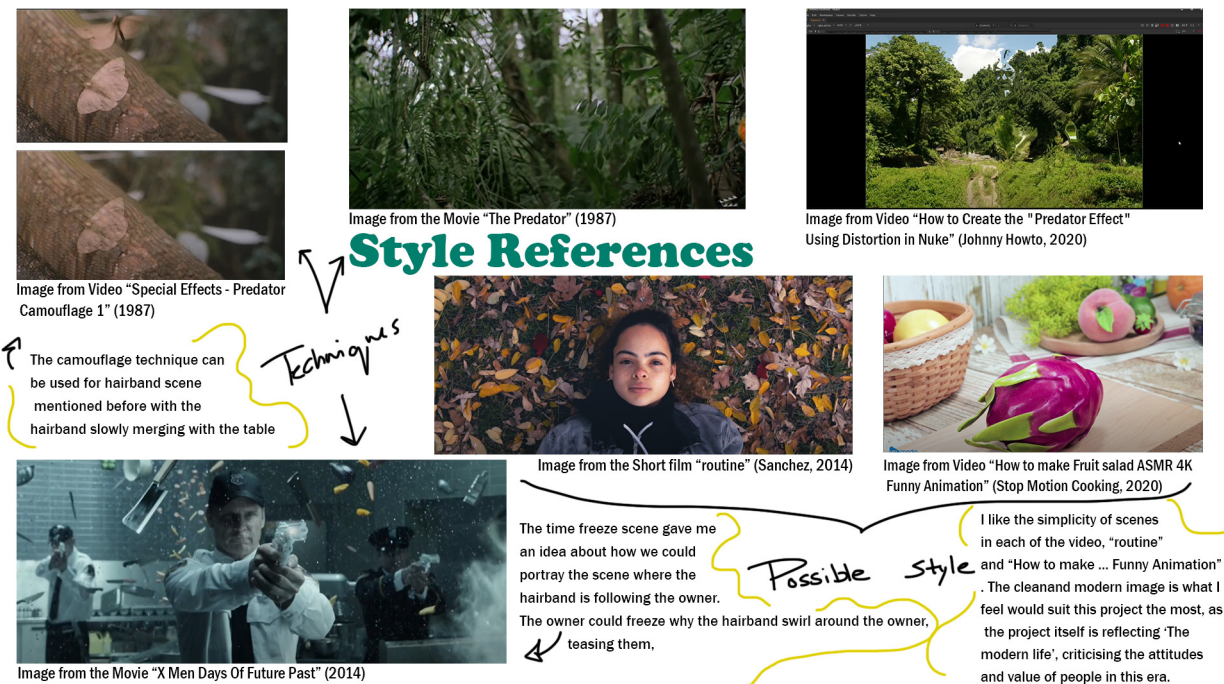
A woman with long dark hair, wearing a beige t-shirt and a patterned skirt, stands in a kitchen. She is holding a large green cabbage. In the background, a hairband is floating in the air, illustrating the theme of invisibility. The kitchen has white cabinets and a black countertop.

# Small Significance



# WHAT I DID

After defining what invisibility means to us, I experimented with different editing and VFX techniques to help bring out the best meaning of invisibility. There were also many creative and technical problems that occurred, such as the light changing often when filming, but it was solved after numerous trials and errors.



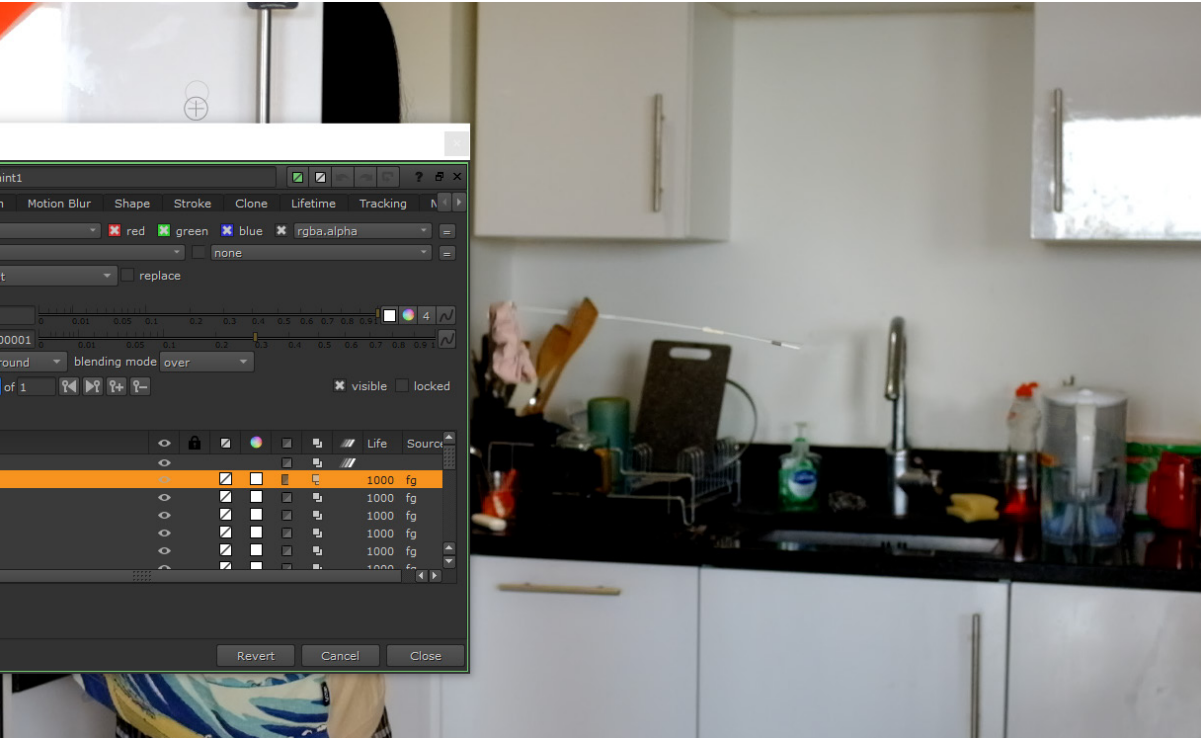
## RESEARCHES & REFERENCES



## TEST SHOOTS

4		<div>→ Remove rod</div> <div>→ CC/Grading</div> <div>→ Paint work on hairband</div> <div>→ (35-1910)</div> <div>Might have to track, probably not slightly shake at the very end.</div>	Pat
5		<div>→ Remove rod</div> <div>→ CC/Grading</div> <div>→ 5_a (0-264)</div> <div>→ 5_b (885-946)</div> <div>→ 5_c (728-859)</div>	Pat

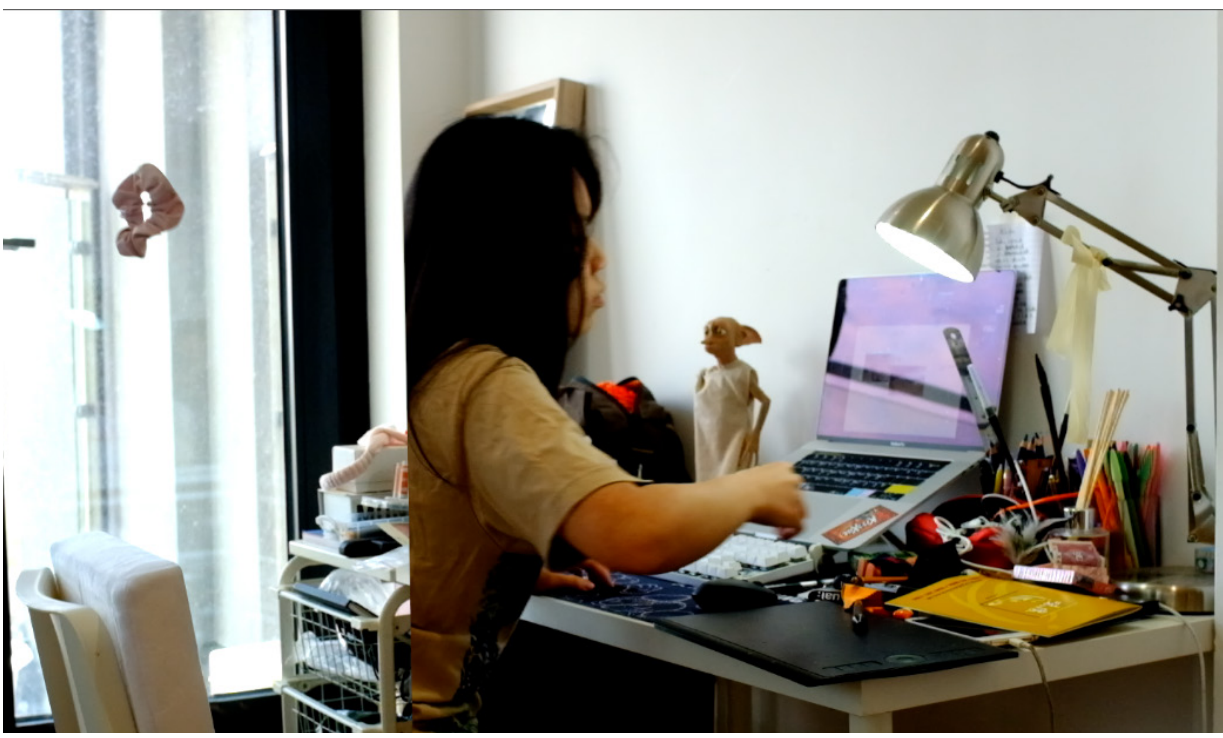
## SHOOTING SCHEDULE



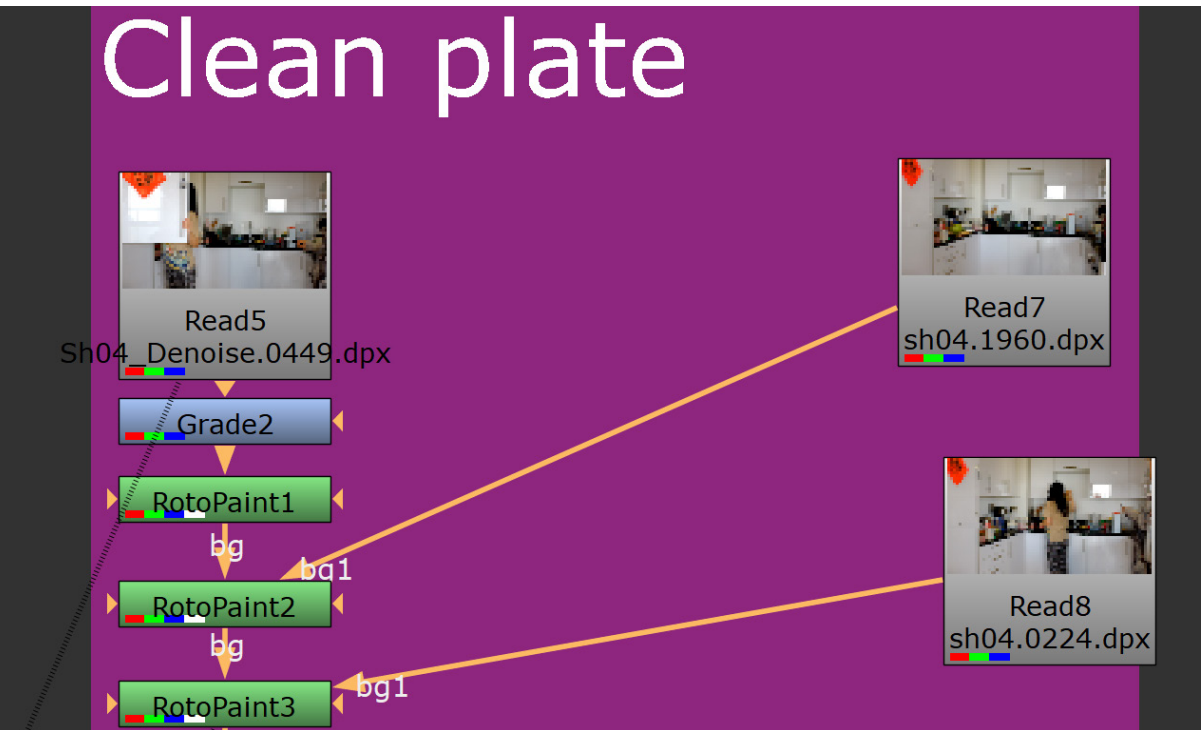
## PAINT CLEAN UP



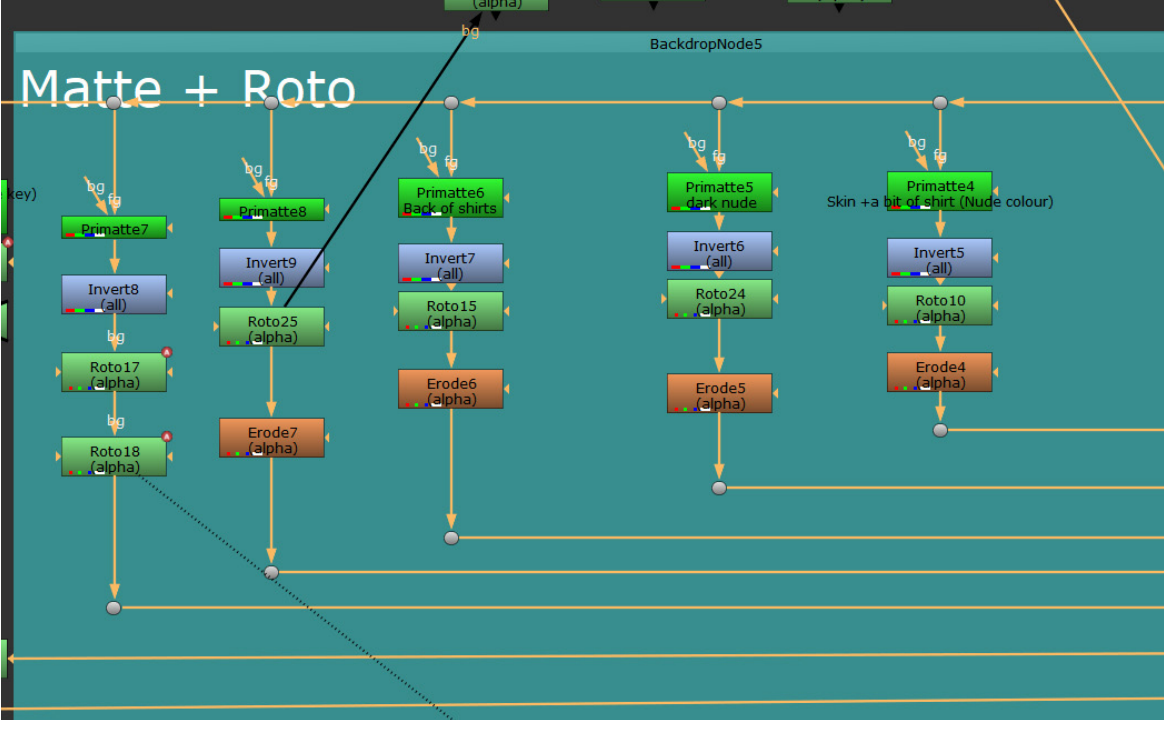
## MORE CLEAN UP



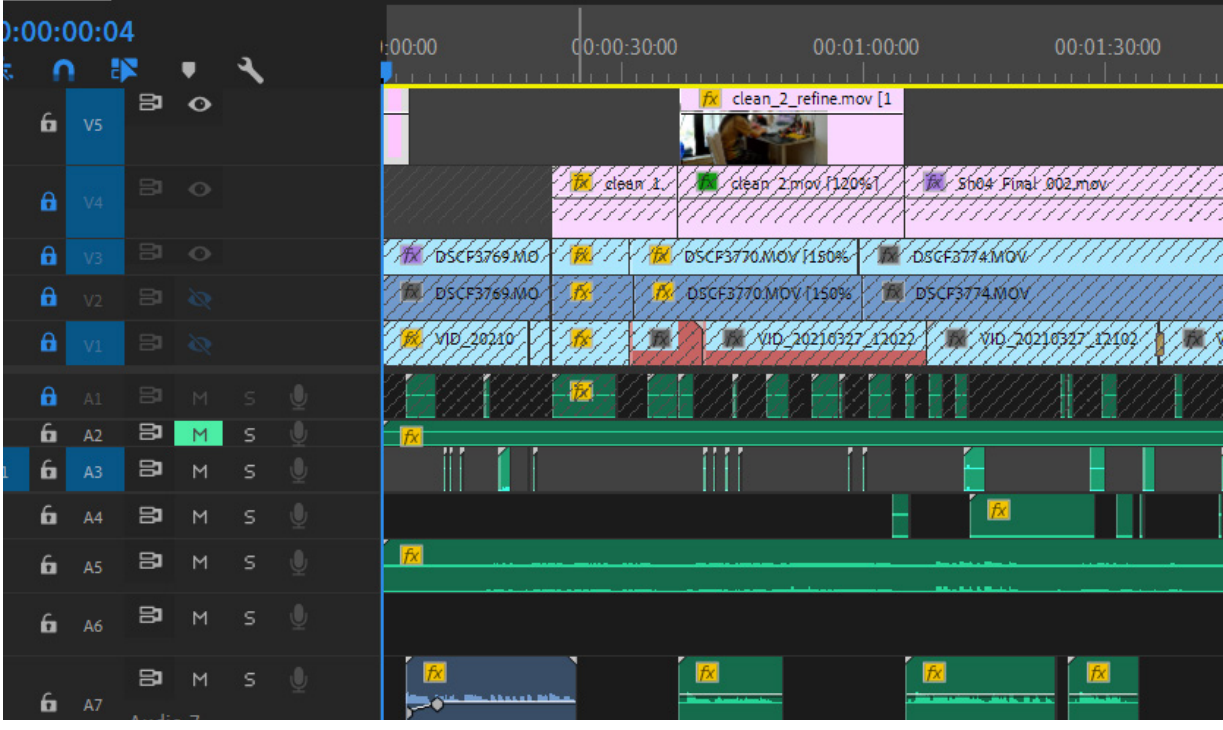
## COLOUR CORRECTION



## MAKING CLEAN PLATE /PREP



## CREATING A MATTE



## EDITING







# VIEW MORE AT

(Click on the images)

The result: an unembellished quick reminder for everyone to stop for a second and appreciate the small little things around them.



THE OUTCOME

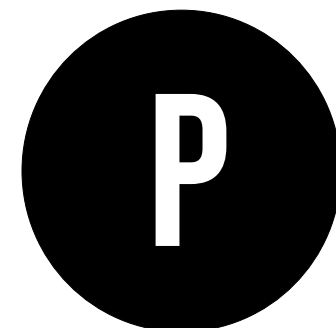


BREAKDOWN REEL





PAT  
NITAYACHAI



## SUMMARY

I am in my final year of studying BA Animation at the University of the Arts London. My interest lies in creative directing, particularly in storytelling, and have collaborated on many passion projects with different people across my college.

I also enjoy being involved in the post-production parts of the project as I like seeing the little details form into a new and complete work.

Thank you for looking at my portfolio, any feedback is greatly appreciated!

Tel: +44 (0)7902402929

Email: [p.nitayachai@gmail.com](mailto:p.nitayachai@gmail.com)